



Artwork designed by Rickesha Burdett.

*Rickesha is an artist and Noongar woman from the Menang region of WA and currently living in the Whadjuk country.*

# First Nations Respiratory Infection Molecular Point of Care Testing Program Report

Month of Issue: April 2024

Contact for more information: [asharma@kirby.unsw.edu.au](mailto:asharma@kirby.unsw.edu.au)



## Table of Contents

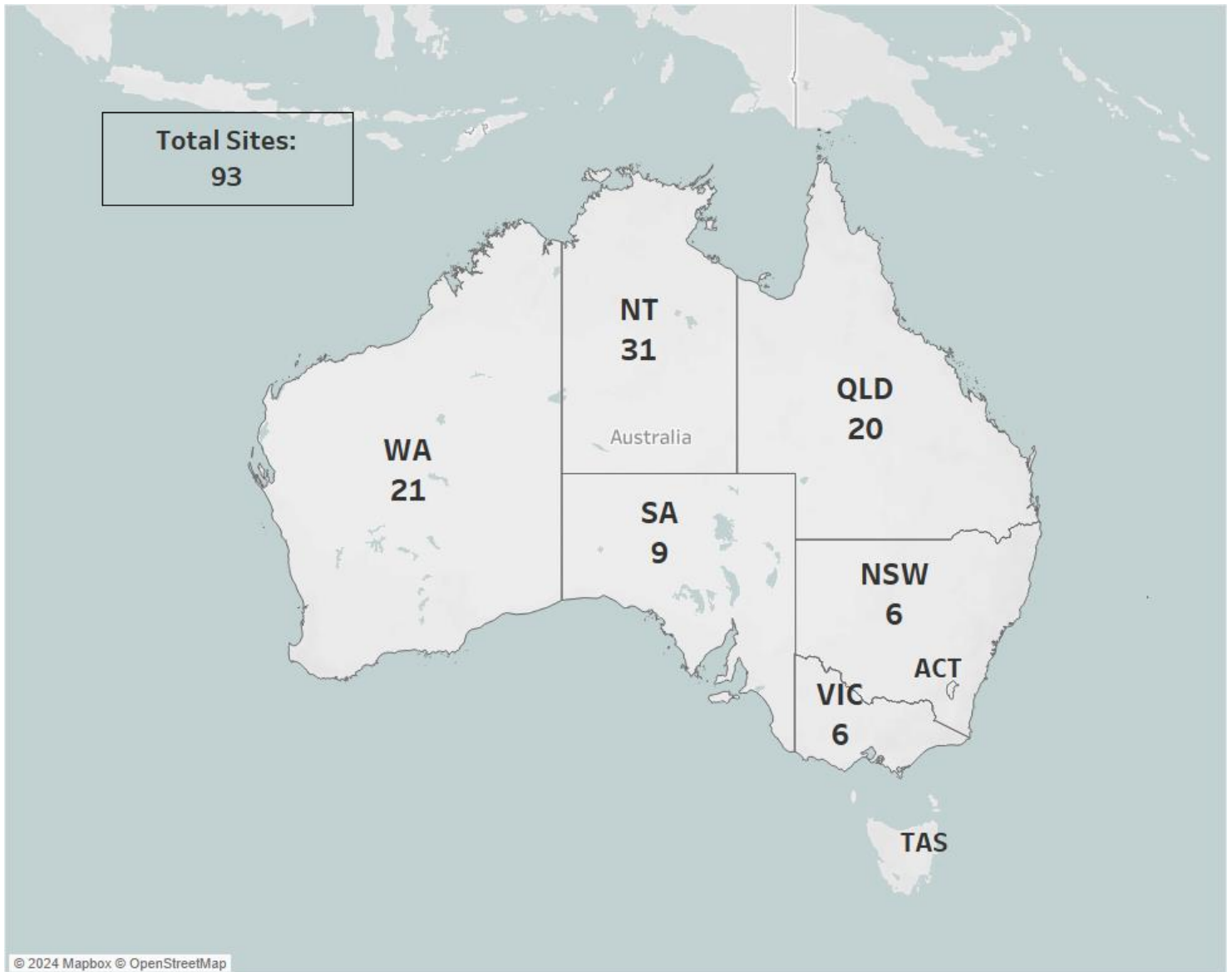
1.	Number of current operational services in each jurisdiction .....	1
2.	Cumulative Respiratory POC patient tests over time.....	2
3.	Weekly number of Respiratory POC patient tests by year.....	3
4.	SARS-CoV-2 POC patient test positivity .....	4
5.	Overview of Respiratory POC program for last six months .....	5
a.	Respiratory POC patient tests positivity by infection type .....	5
b.	Number of Respiratory POC patient tests per week by age group.....	6
c.	Number of Respiratory POC patient tests per week by jurisdiction.....	7
d.	Proportion of Respiratory POC patient tests per week by Aboriginal and Torres Strait Islander status.....	8
e.	Proportion of Respiratory POC patient tests per week by gender.....	9



# First Nations Respiratory Infection Molecular Point of Care Testing Program Report

April 2024

## 1. Number of current operational services in each jurisdiction

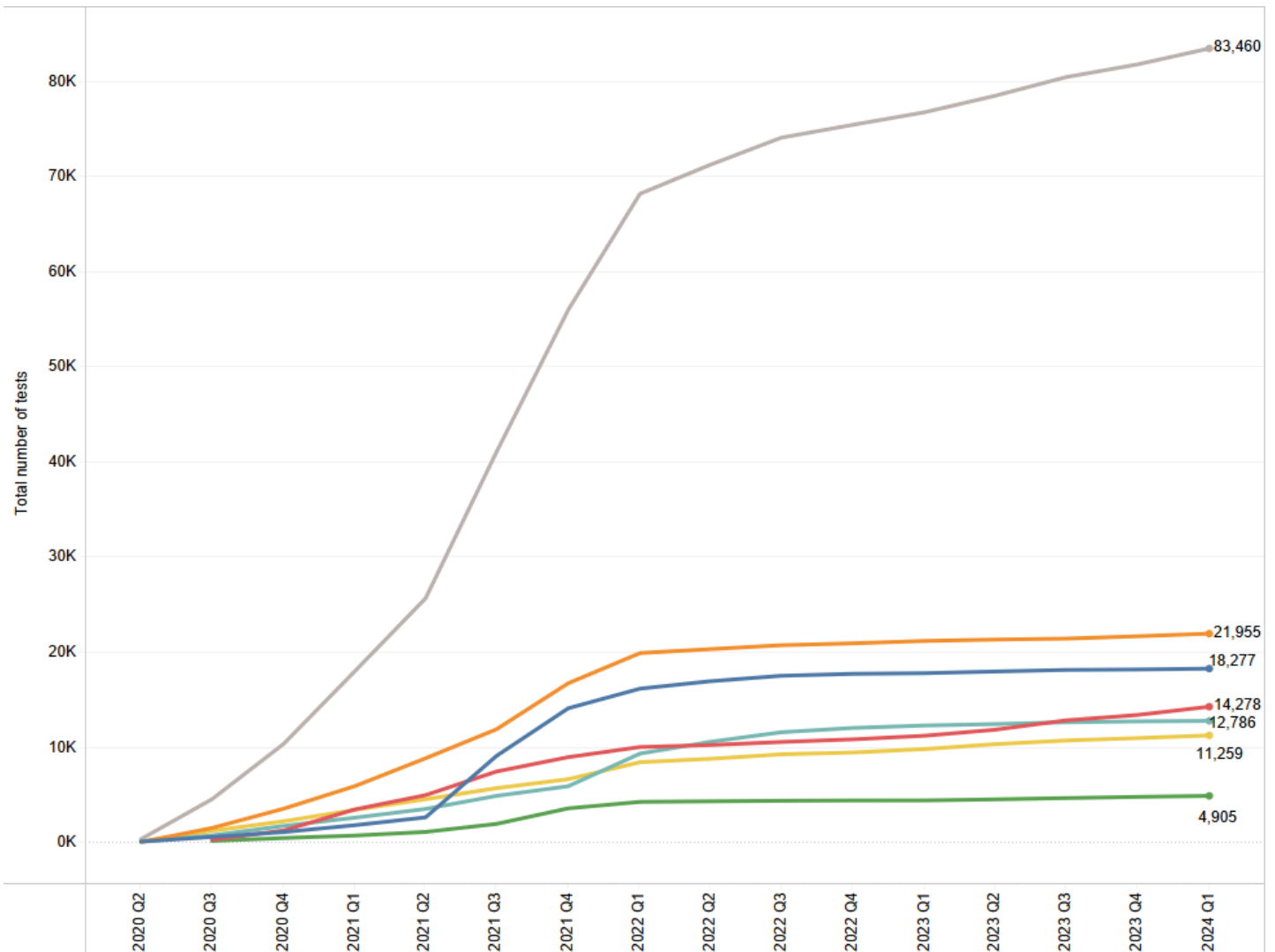




# First Nations Respiratory Infection Molecular Point of Care Testing Program Report

April 2024

## 2. Cumulative Respiratory POC patient tests over time



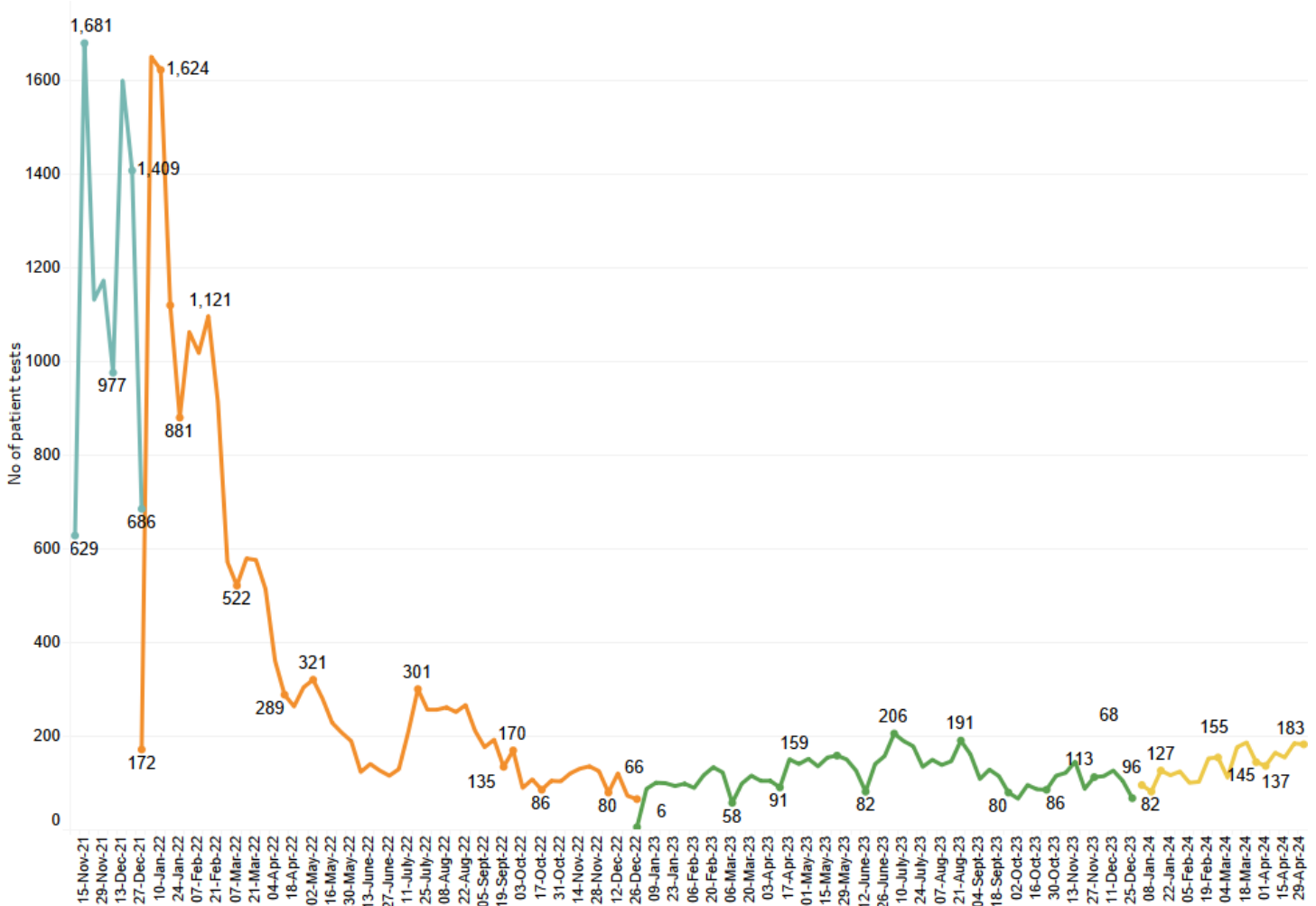
The above chart contains single-plex (SARS-CoV-2 only), 4-plex (SARS-CoV-2, FluA, FluB and RSV) and 4-plex plus patient tests. Program transitioned to using 4-plex test from July 2022 and is now currently transitioning to 4-plex plus.

- Jurisdiction
- NSW
  - NT
  - QLD
  - SA
  - VIC
  - WA
- Total no of patient tests

# First Nations Respiratory Infection Molecular Point of Care Testing Program Report

April 2024

## 3. Weekly number of Respiratory POC patient tests by year



The above chart contains single-plex (SARS-CoV-2 only), 4-plex (SARS-CoV-2, FluA, FluB and RSV) and 4-plex plus patient tests. Program transitioned to using 4-plex test from July 2022 and is now currently transitioning to 4-plex plus.

Year of test date

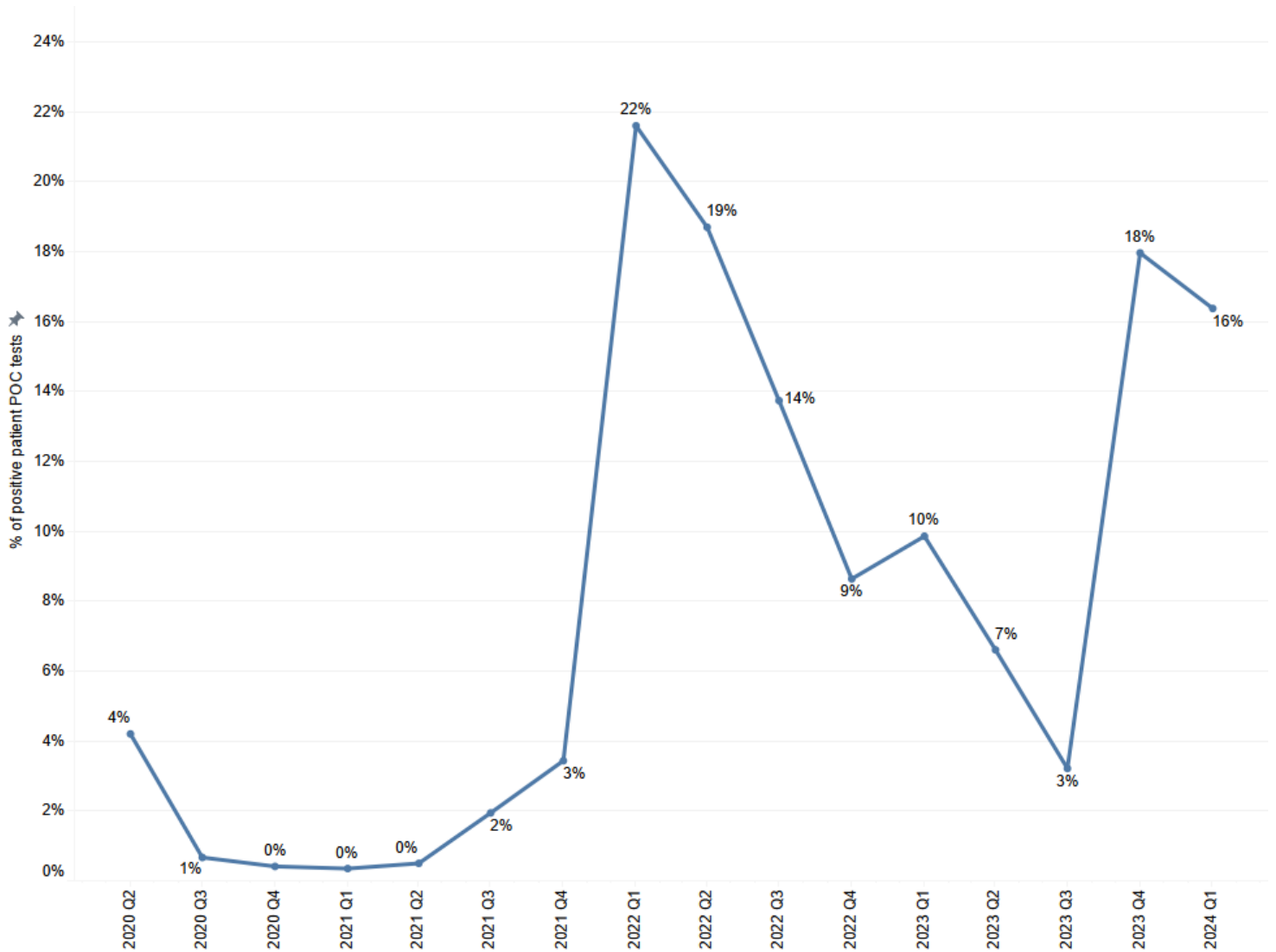
- 2021
- 2022
- 2023
- 2024



# First Nations Respiratory Infection Molecular Point of Care Testing Program Report

April 2024

## 4. SARS-CoV-2 POC patient test positivity



The above chart contains SARS-CoV-2 patient tests only.

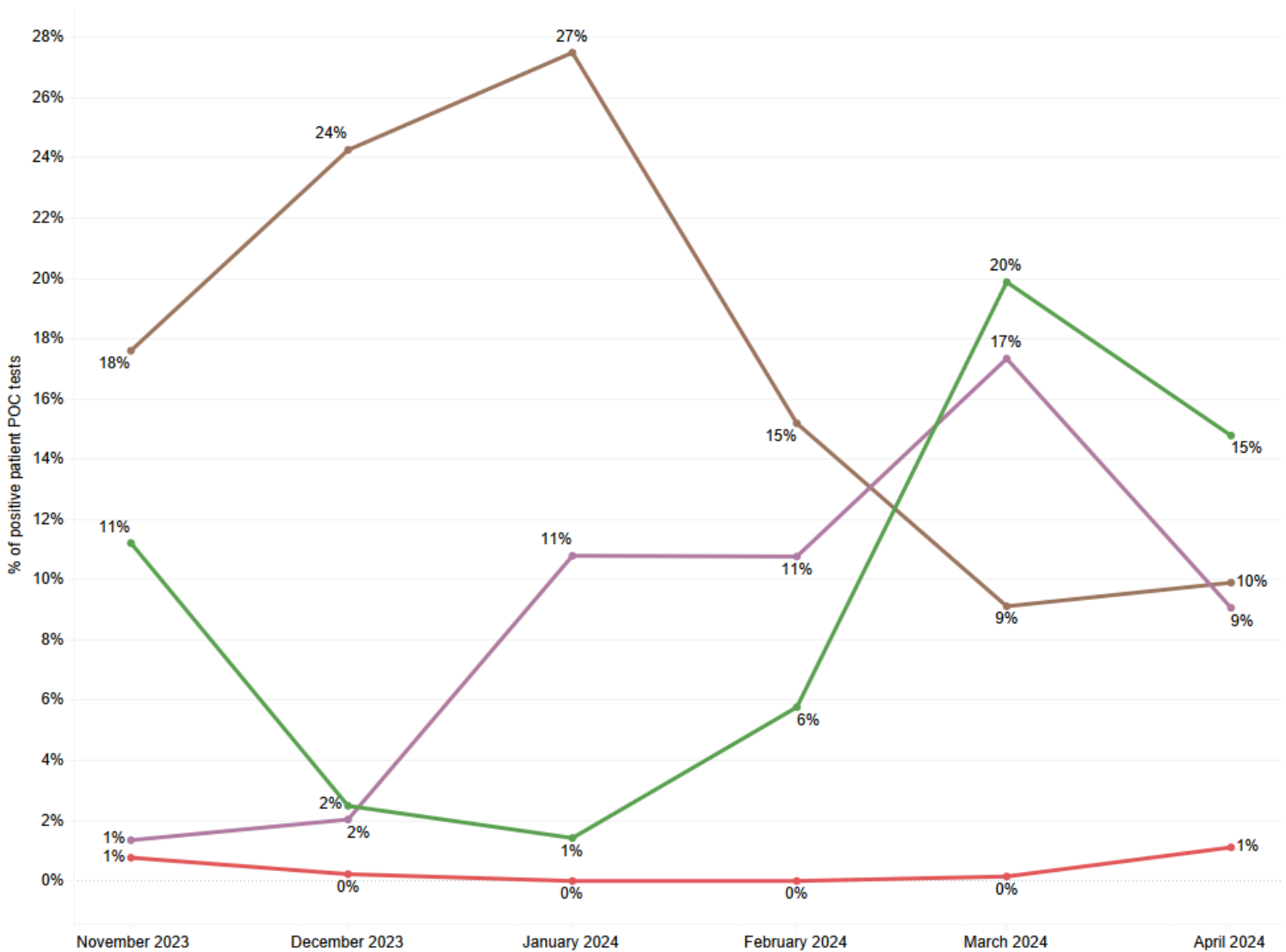


# First Nations Respiratory Infection Molecular Point of Care Testing Program Report

April 2024

## 5. Overview of Respiratory POC program for last six months

### a. Respiratory POC patient tests positivity by infection type



The above chart contains 4-plex (SARS-CoV-2, FluA, FluB and RSV) and 4-plex plus patient tests.

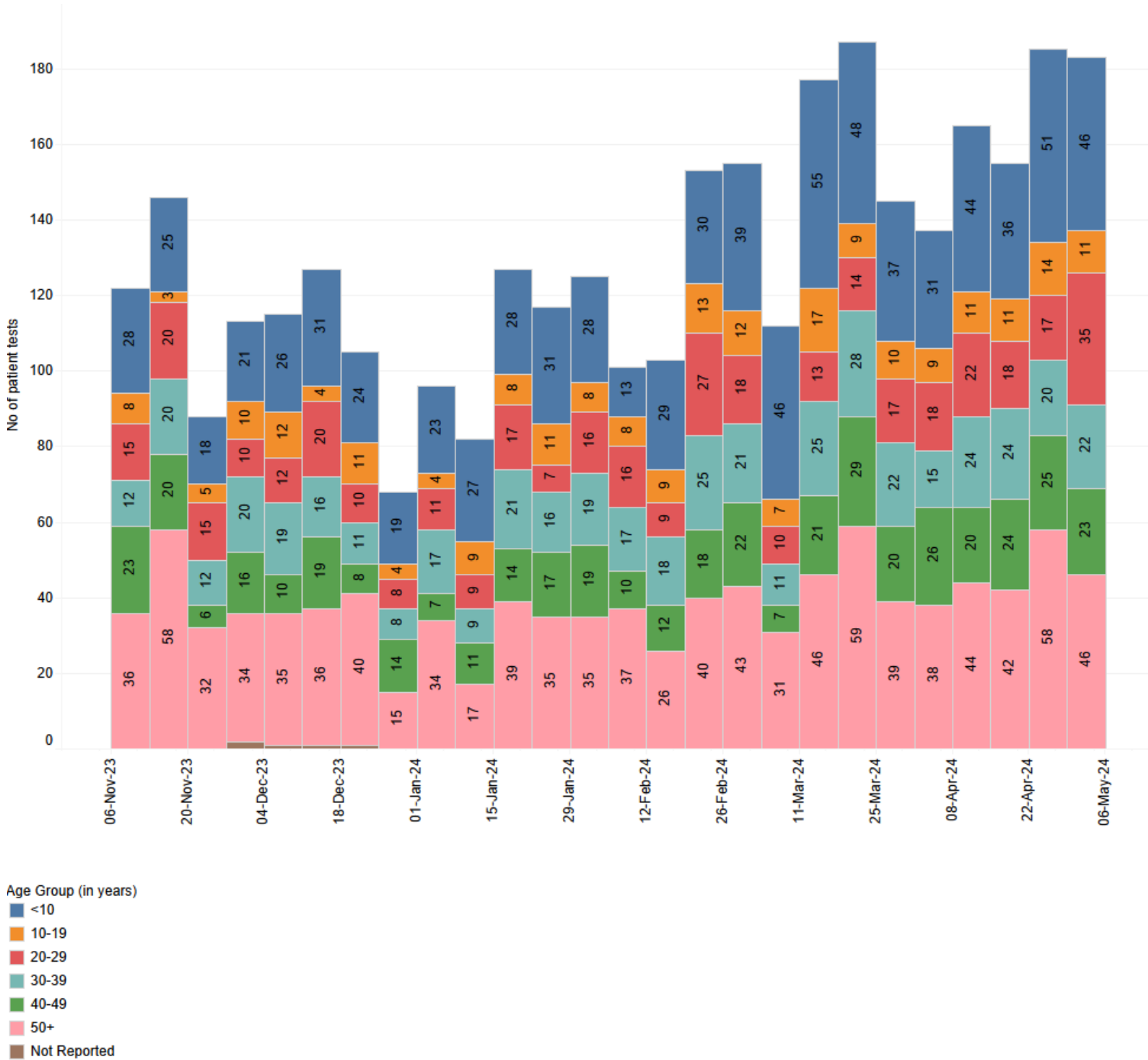
Respiratory Infection Type

- Flu A
- Flu B
- RSV
- SARS-CoV-2

# First Nations Respiratory Infection Molecular Point of Care Testing Program Report

April 2024

b. Number of Respiratory POC patient tests per week by age group

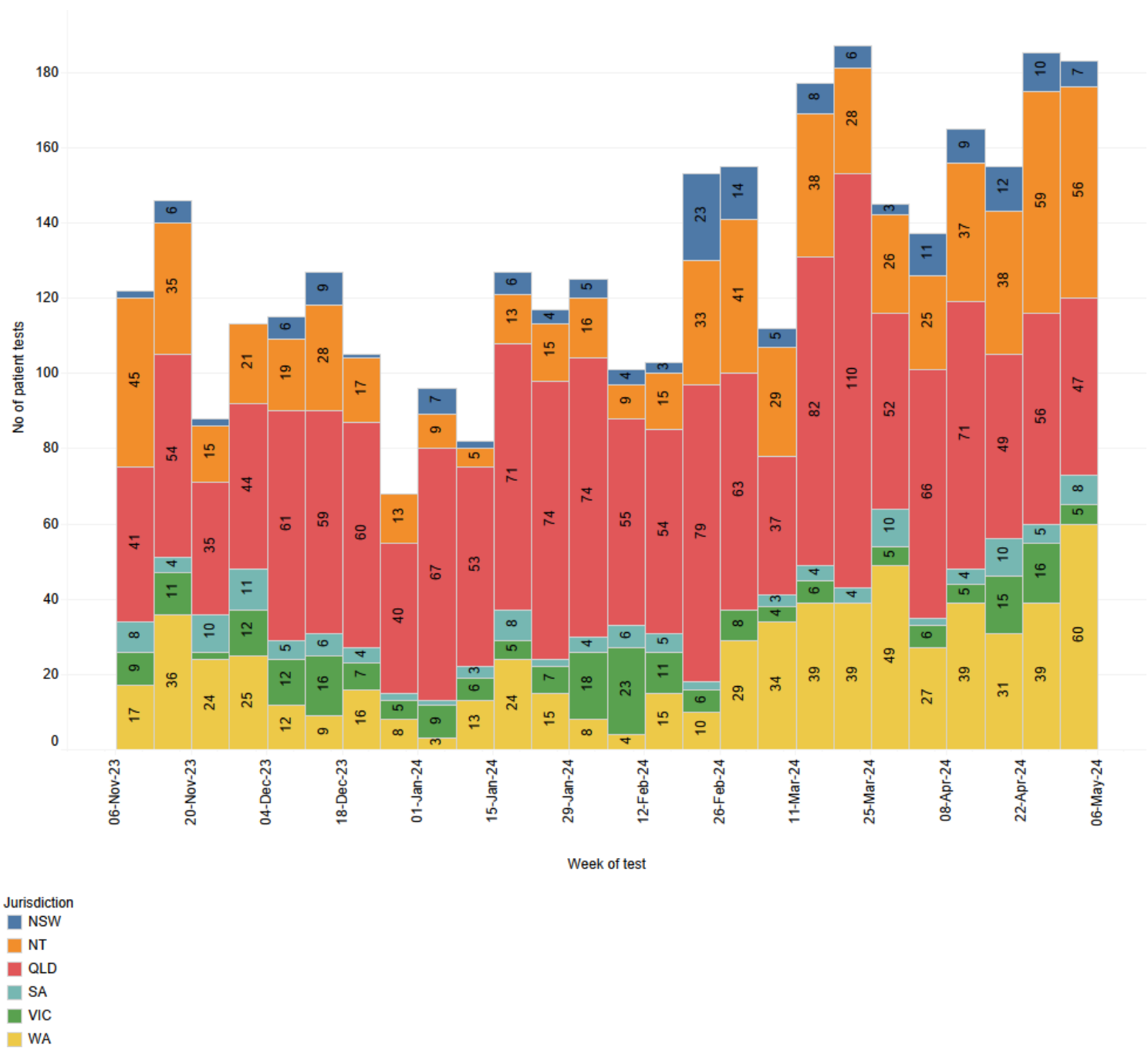




# First Nations Respiratory Infection Molecular Point of Care Testing Program Report

April 2024

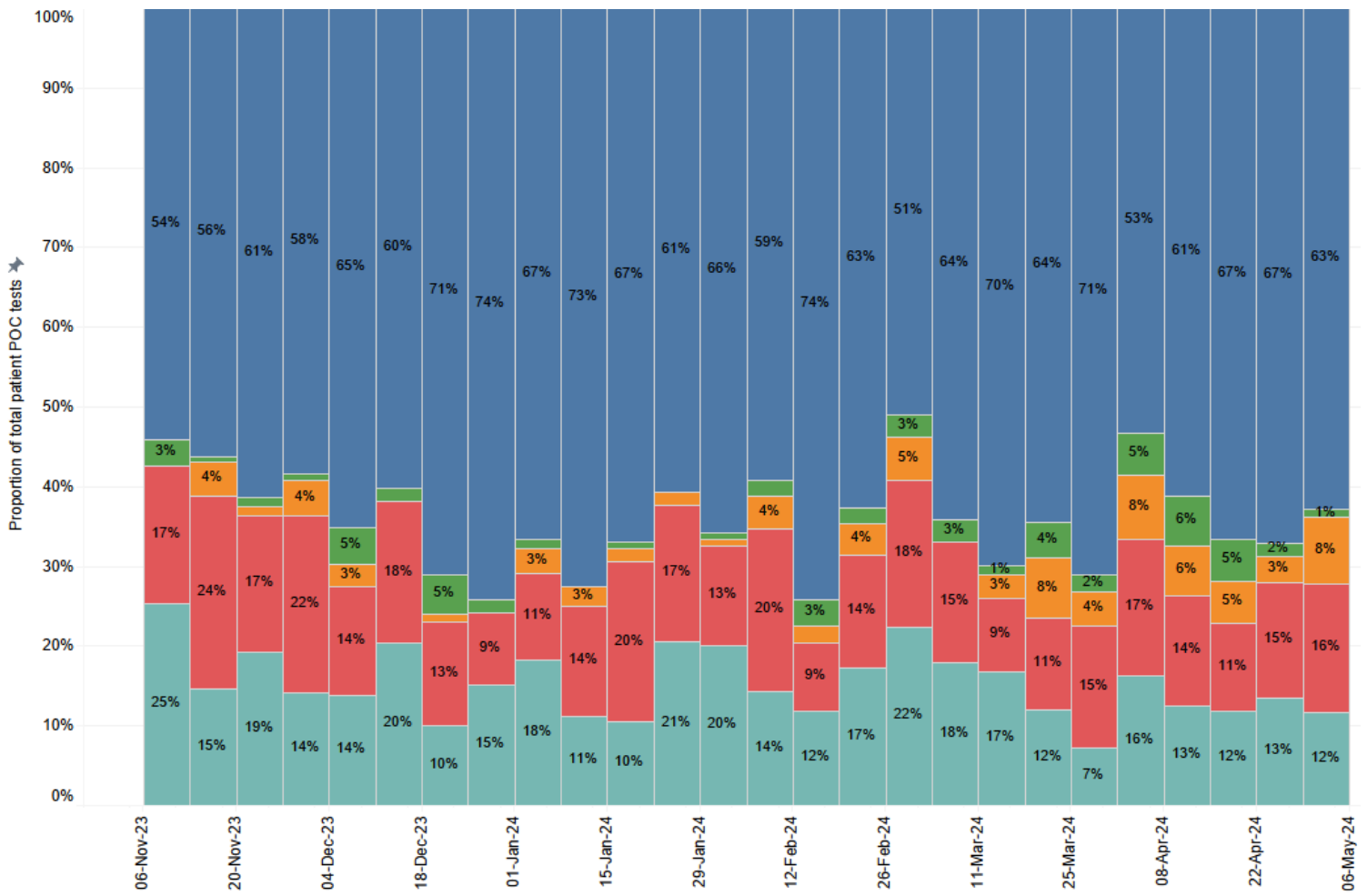
c. Number of Respiratory POC patient tests per week by jurisdiction



# First Nations Respiratory Infection Molecular Point of Care Testing Program Report

April 2024

## d. Proportion of Respiratory POC patient tests per week by Aboriginal and Torres Strait Islander status



Aboriginal & Torres Strait Islander status

- Aboriginal
- Torres Strait Islander
- Aboriginal & Torres Strait Islander
- Non-Indigenous
- Not reported



# First Nations Respiratory Infection Molecular Point of Care Testing Program Report

April 2024

## e. Proportion of Respiratory POC patient tests per week by gender

