



Artwork designed by Rickesha Burdett.

Rickesha is an artist and Noongar woman from the Menang region of WA and currently living in the Whadjuk country.

First Nations Respiratory Infection Molecular Point of Care Testing Program Report

Month of Issue: May 2024

Contact for more information: asharma@kirby.unsw.edu.au



Table of Contents

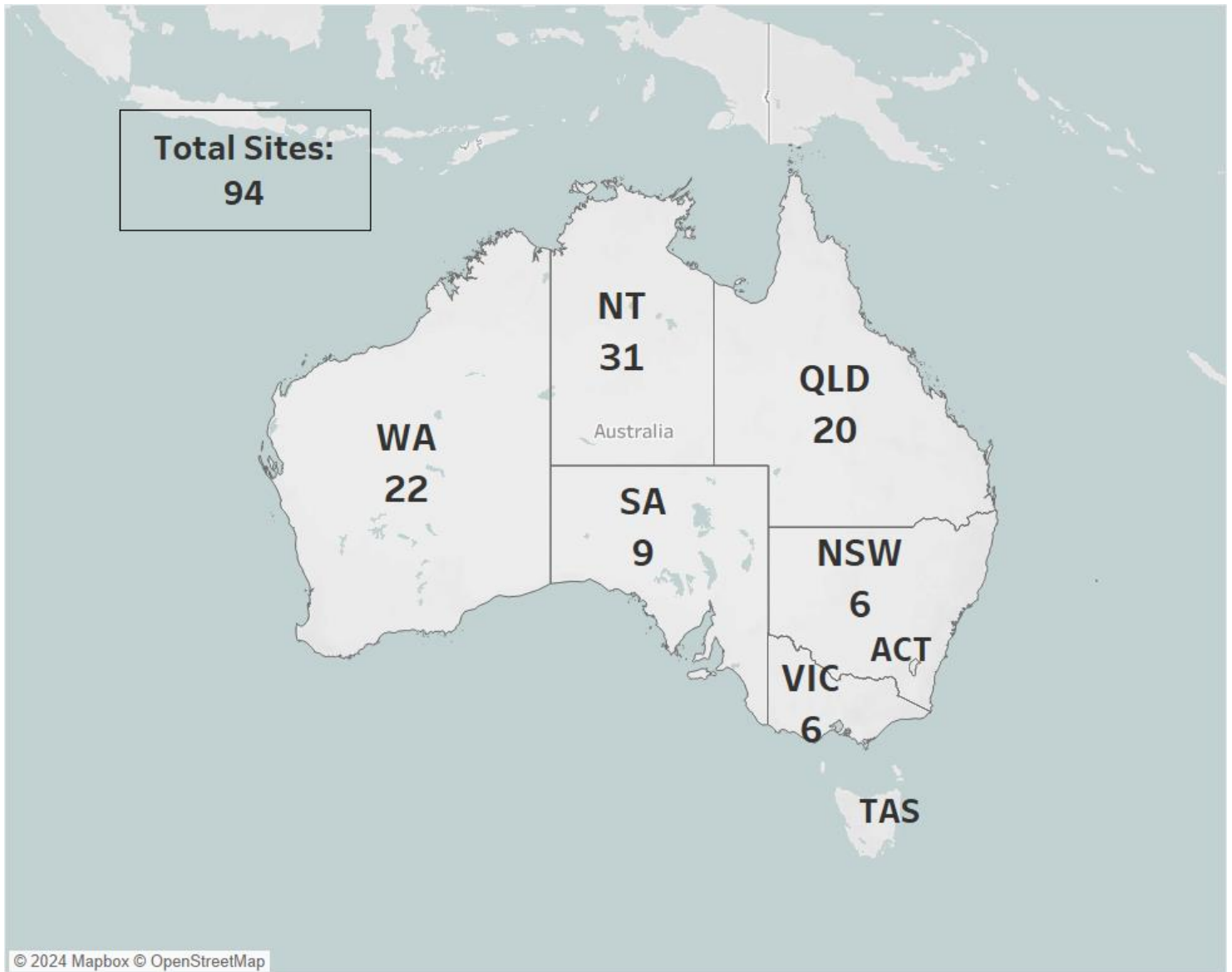
1.	Number of current operational services in each jurisdiction	1
2.	Cumulative Respiratory POC patient tests over time.....	2
3.	Weekly number of Respiratory POC patient tests by year.....	3
4.	SARS-CoV-2 POC patient test positivity	4
5.	Overview of Respiratory POC program for last six months	5
a.	Respiratory POC patient tests positivity by infection type	5
b.	Number of Respiratory POC patient tests per week by age group.....	6
c.	Number of Respiratory POC patient tests per week by jurisdiction.....	7
d.	Proportion of Respiratory POC patient tests per week by Aboriginal and Torres Strait Islander status.....	8
e.	Proportion of Respiratory POC patient tests per week by gender.....	9



First Nations Respiratory Infection Molecular Point of Care Testing Program Report

May 2024

1. Number of current operational services in each jurisdiction

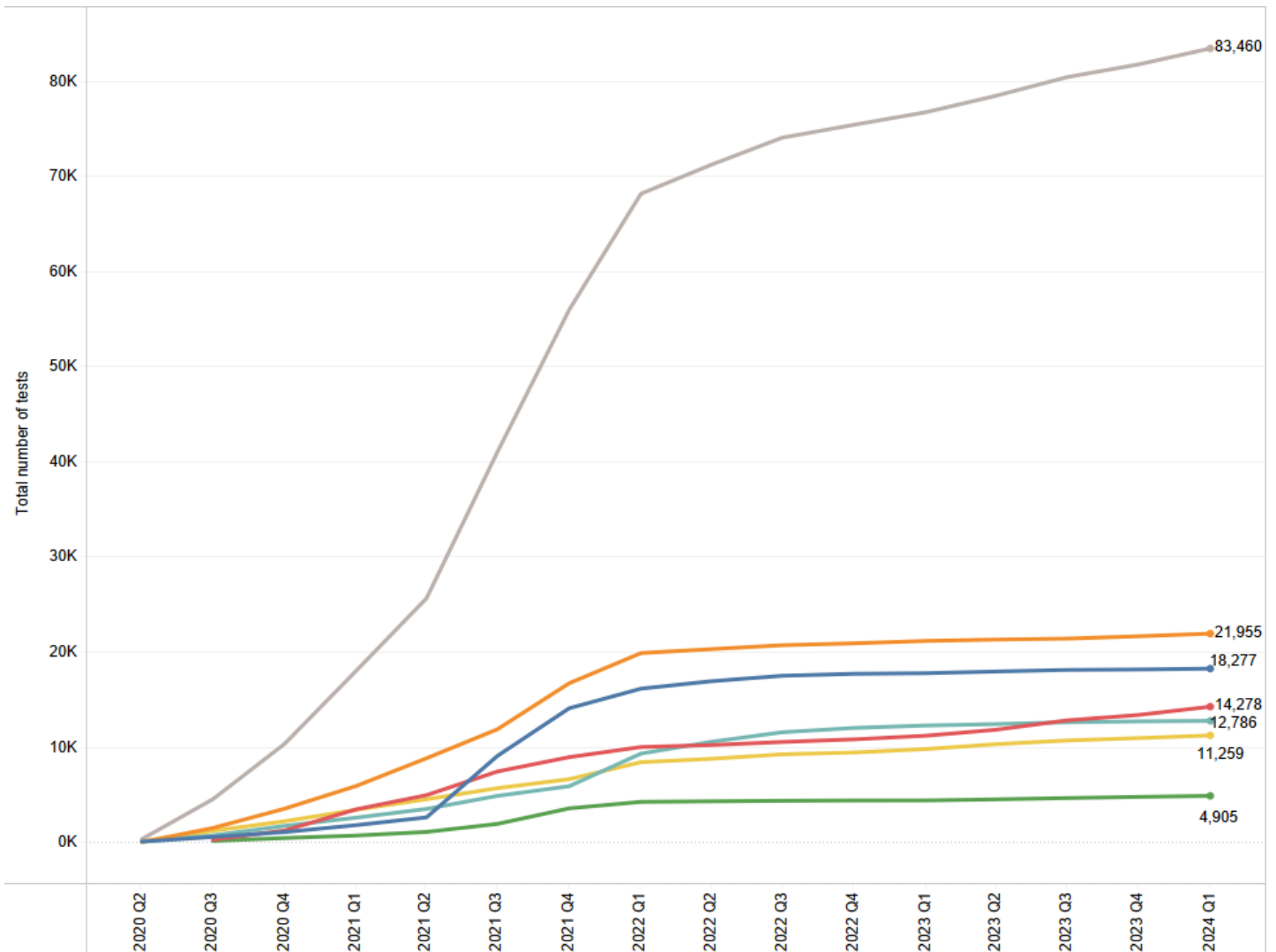




First Nations Respiratory Infection Molecular Point of Care Testing Program Report

May 2024

2. Cumulative Respiratory POC patient tests over time



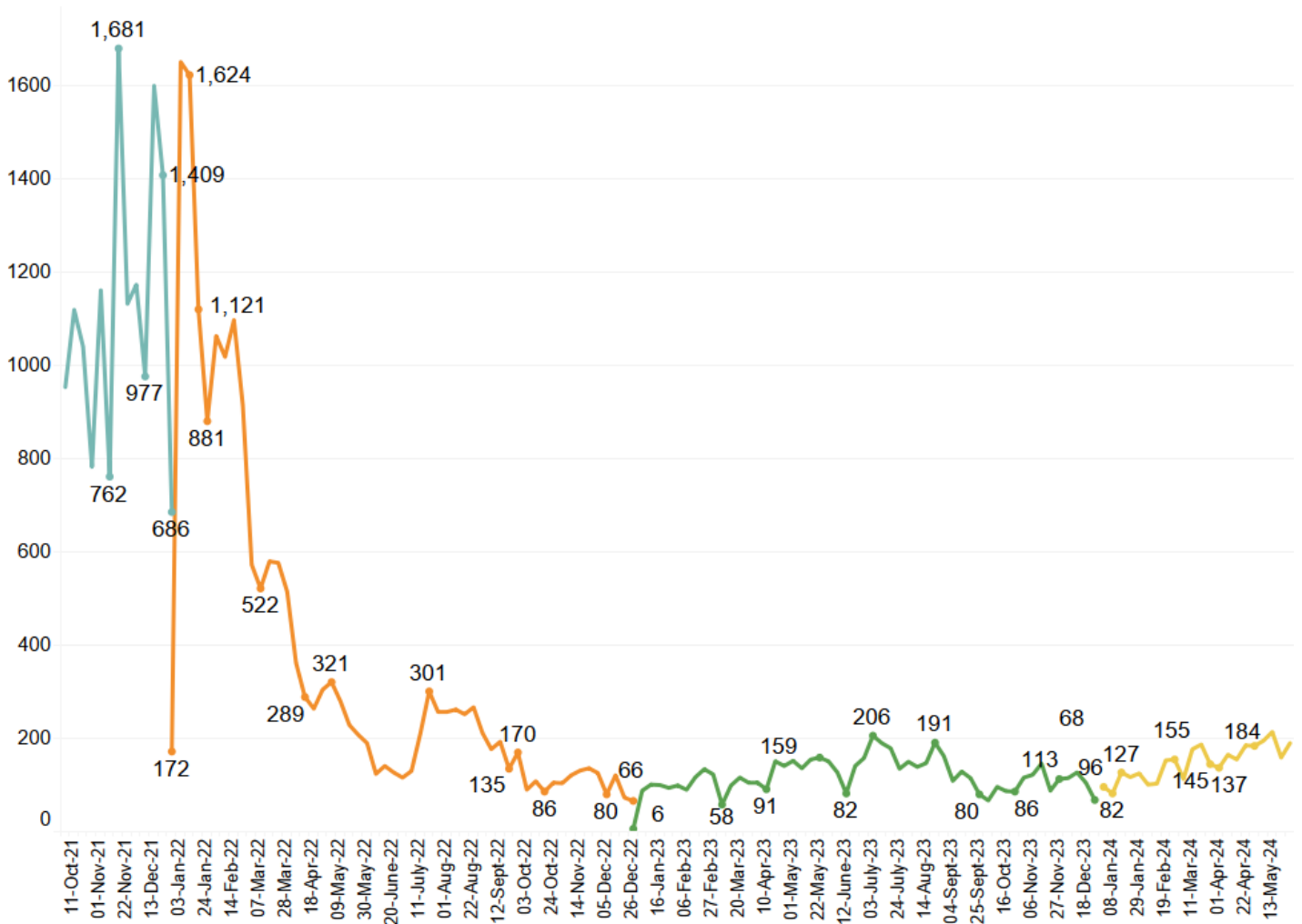
The above chart contains single-plex (SARS-CoV-2 only), 4-plex (SARS-CoV-2, FluA, FluB and RSV) and 4-plex plus patient tests. Program transitioned to using 4-plex test from July 2022 and is now currently transitioning to 4-plex plus.

- Jurisdiction
- NSW
 - NT
 - QLD
 - SA
 - VIC
 - WA
- Total no of patient tests

First Nations Respiratory Infection Molecular Point of Care Testing Program Report

May 2024

3. Weekly number of Respiratory POC patient tests by year



The above chart contains single-plex (SARS-CoV-2 only), 4-plex (SARS-CoV-2, FluA, FluB and RSV) and 4-plex plus patient tests. Program transitioned to using 4-plex test from July 2022 and is now currently transitioning to 4-plex plus.

Year of test date

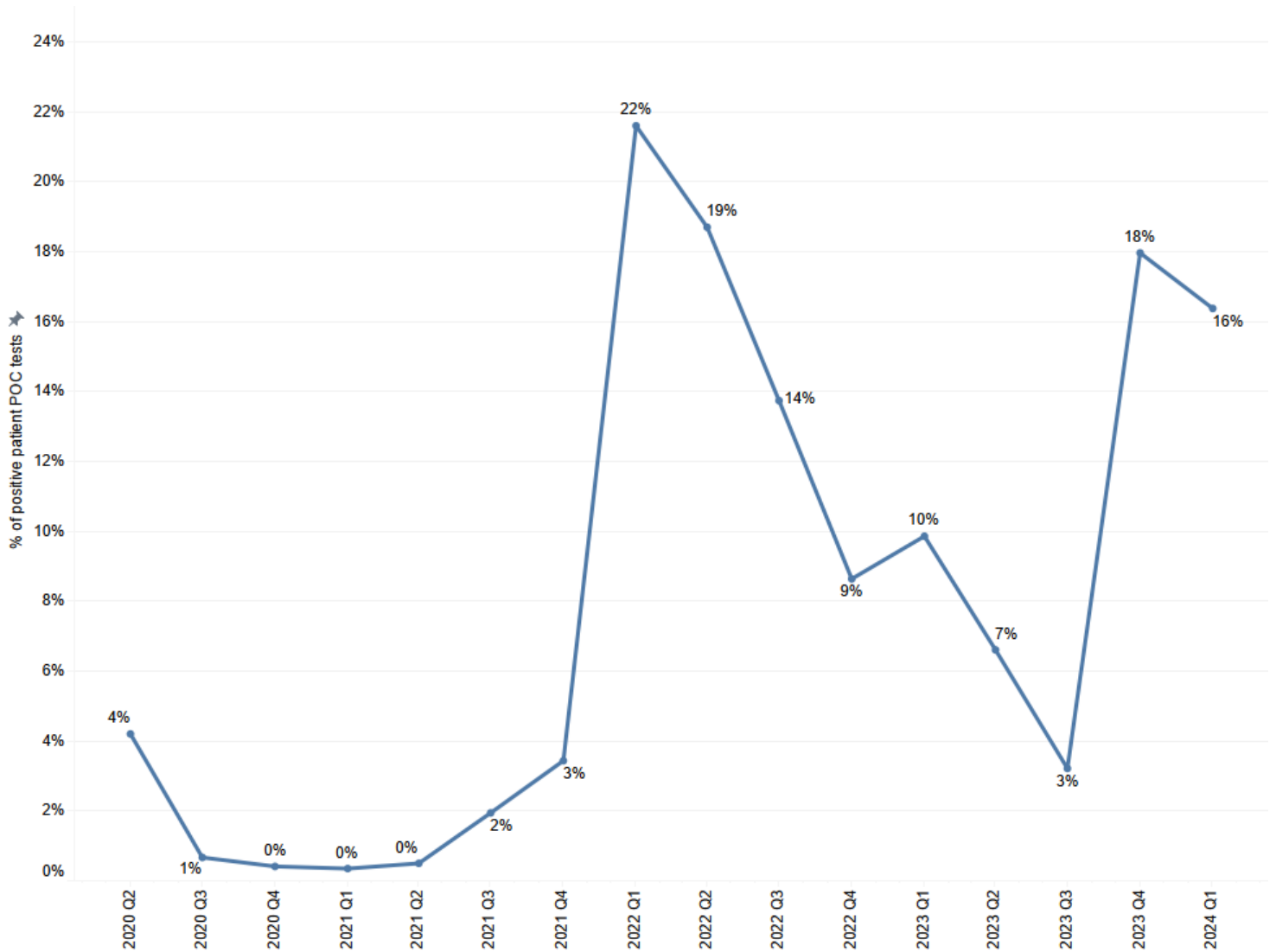
- 2021
- 2022
- 2023
- 2024



First Nations Respiratory Infection Molecular Point of Care Testing Program Report

May 2024

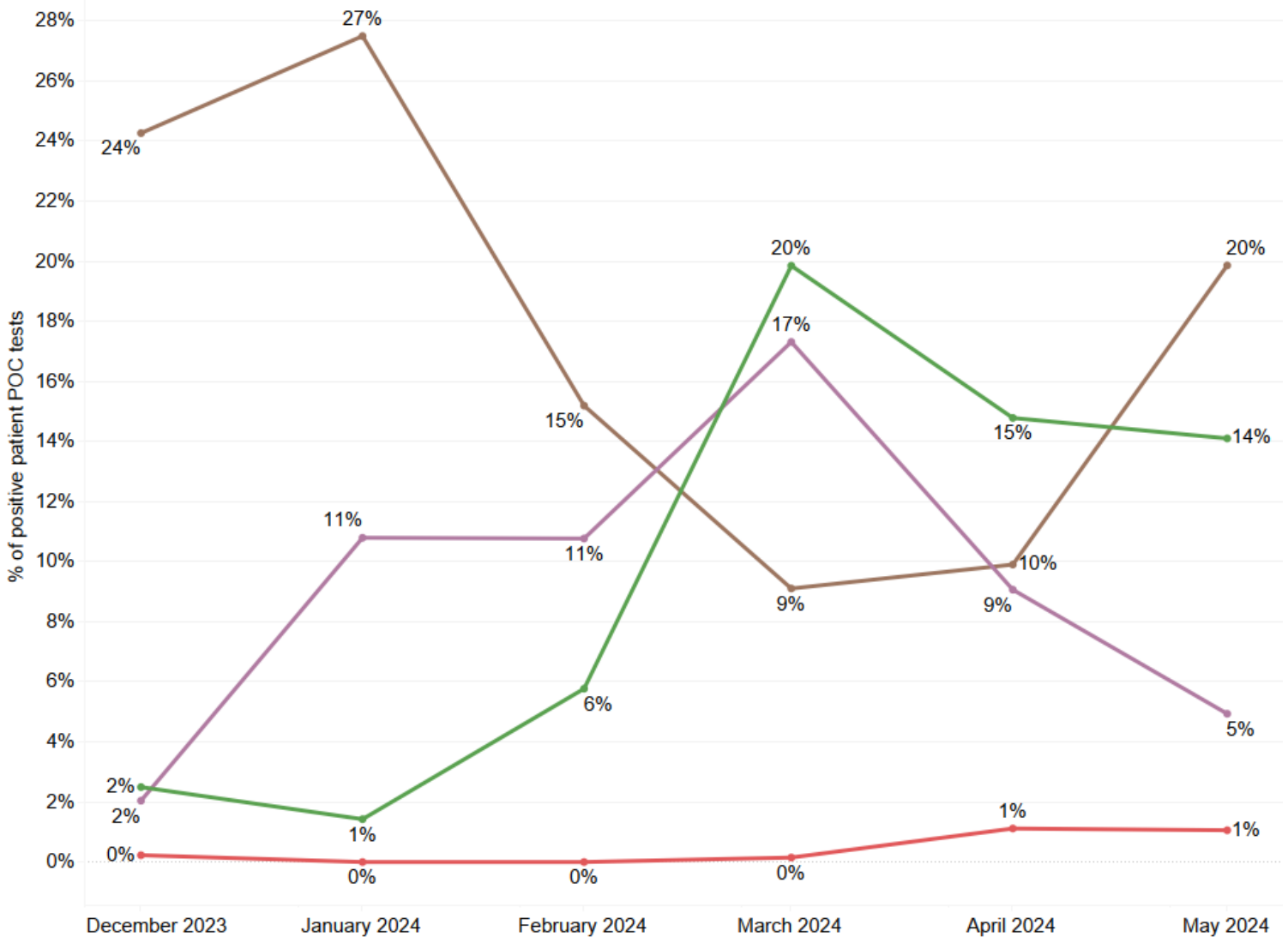
4. SARS-CoV-2 POC patient test positivity



The above chart contains SARS-CoV-2 patient tests only.

5. Overview of Respiratory POC program for last six months

a. Respiratory POC patient tests positivity by infection type



The above chart contains 4-plex (SARS-CoV-2, FluA, FluB and RSV) and 4-plex plus patient tests.

Respiratory Infection Type

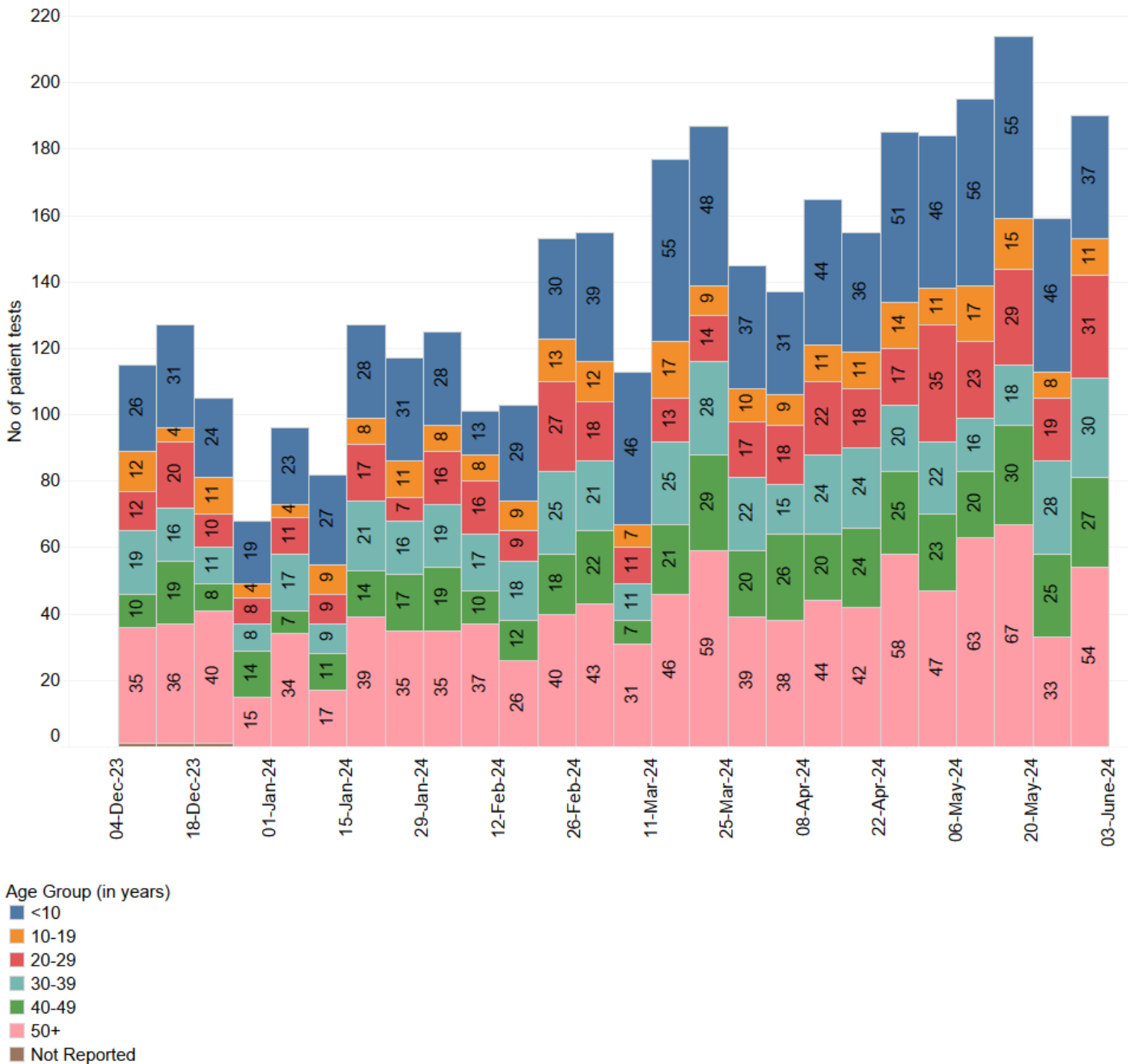
- Flu A
- Flu B
- RSV
- SARS-CoV-2



First Nations Respiratory Infection Molecular Point of Care Testing Program Report

May 2024

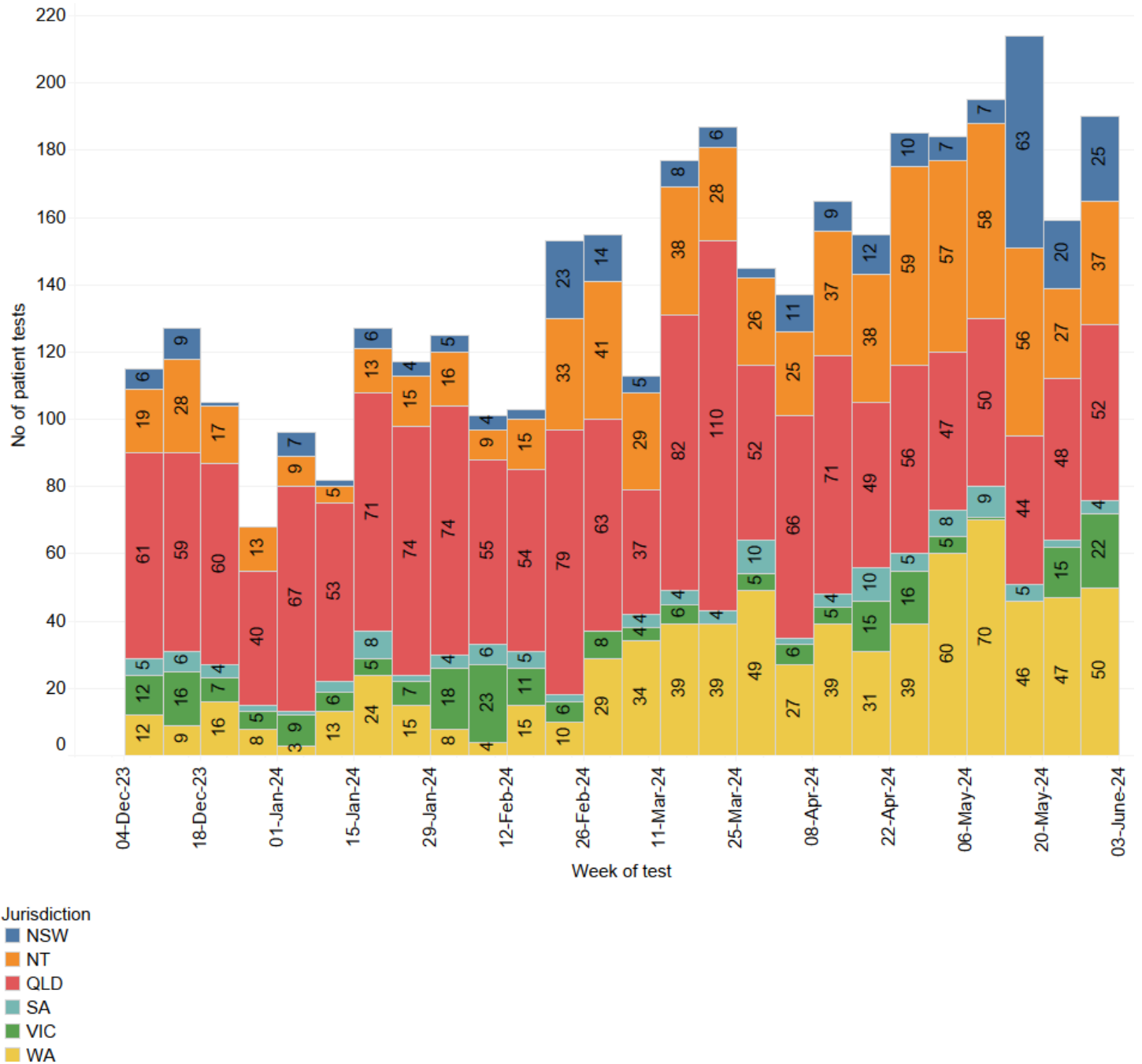
b. Number of Respiratory POC patient tests per week by age group



First Nations Respiratory Infection Molecular Point of Care Testing Program Report

May 2024

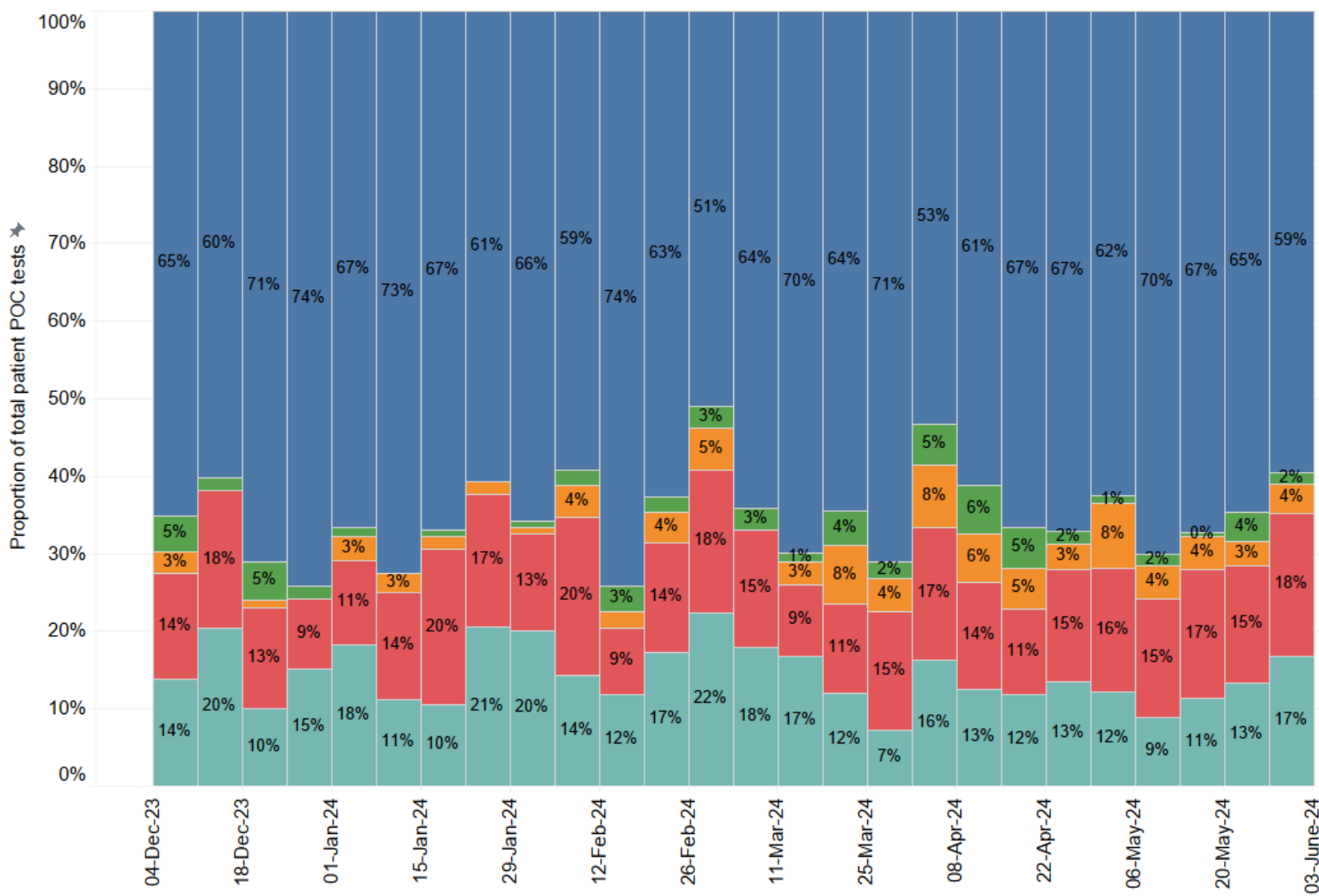
c. Number of Respiratory POC patient tests per week by jurisdiction



First Nations Respiratory Infection Molecular Point of Care Testing Program Report

May 2024

d. Proportion of Respiratory POC patient tests per week by Aboriginal and Torres Strait Islander status



Aboriginal & Torres Strait Islander status

- Aboriginal
- Torres Strait Islander
- Aboriginal & Torres Strait Islander
- Non-Indigenous
- Not reported



First Nations Respiratory Infection Molecular Point of Care Testing Program Report

May 2024

e. Proportion of Respiratory POC patient tests per week by gender

