



Artwork designed by Rickesha Burdett.

*Rickesha is an artist and Noongar woman from the Menang region of WA and currently living in the Whadjuk country.*

# First Nations Respiratory Infection Molecular Point of Care Testing Program Report

Month of Issue: December 2024

Contact for more information: [asharma@kirby.unsw.edu.au](mailto:asharma@kirby.unsw.edu.au)



## Table of Contents

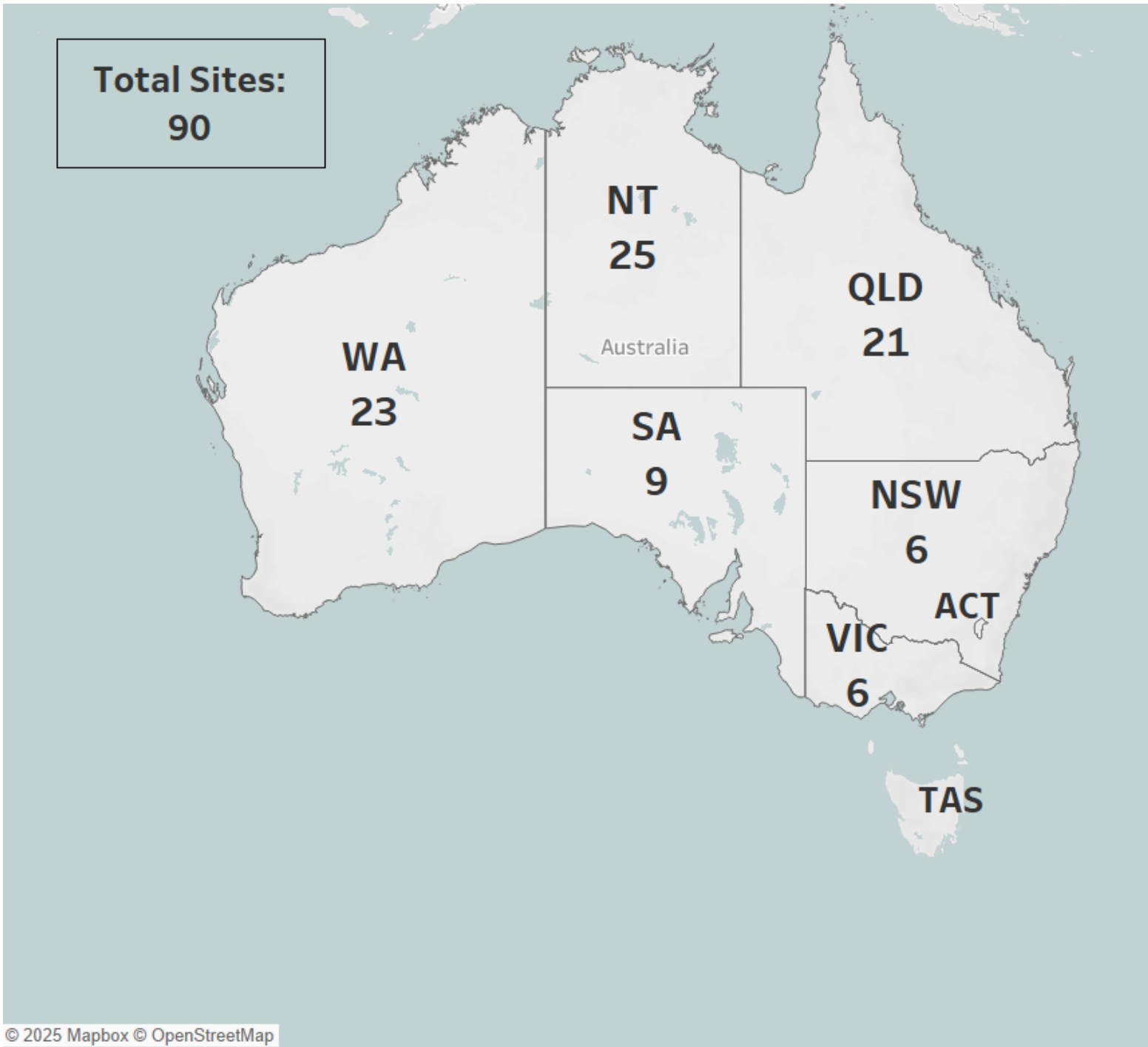
1.	Number of current operational services in each jurisdiction .....	1
2.	Cumulative Respiratory POC patient tests over time.....	2
3.	Weekly number of Respiratory POC patient tests by year.....	3
4.	SARS-CoV-2 POC patient test positivity .....	4
5.	Overview of Respiratory POC program for last six months .....	5
a.	Respiratory POC patient tests positivity by infection type .....	5
b.	Number of Respiratory POC patient tests per week by age group.....	6
c.	Number of Respiratory POC patient tests per week by jurisdiction.....	7
d.	Proportion of Respiratory POC patient tests per week by Aboriginal and Torres Strait Islander status.....	8
e.	Proportion of Respiratory POC patient tests per week by gender.....	9



# First Nations Respiratory Infection Molecular Point of Care Testing Program Report

December 2024

## 1. Number of current operational services in each jurisdiction

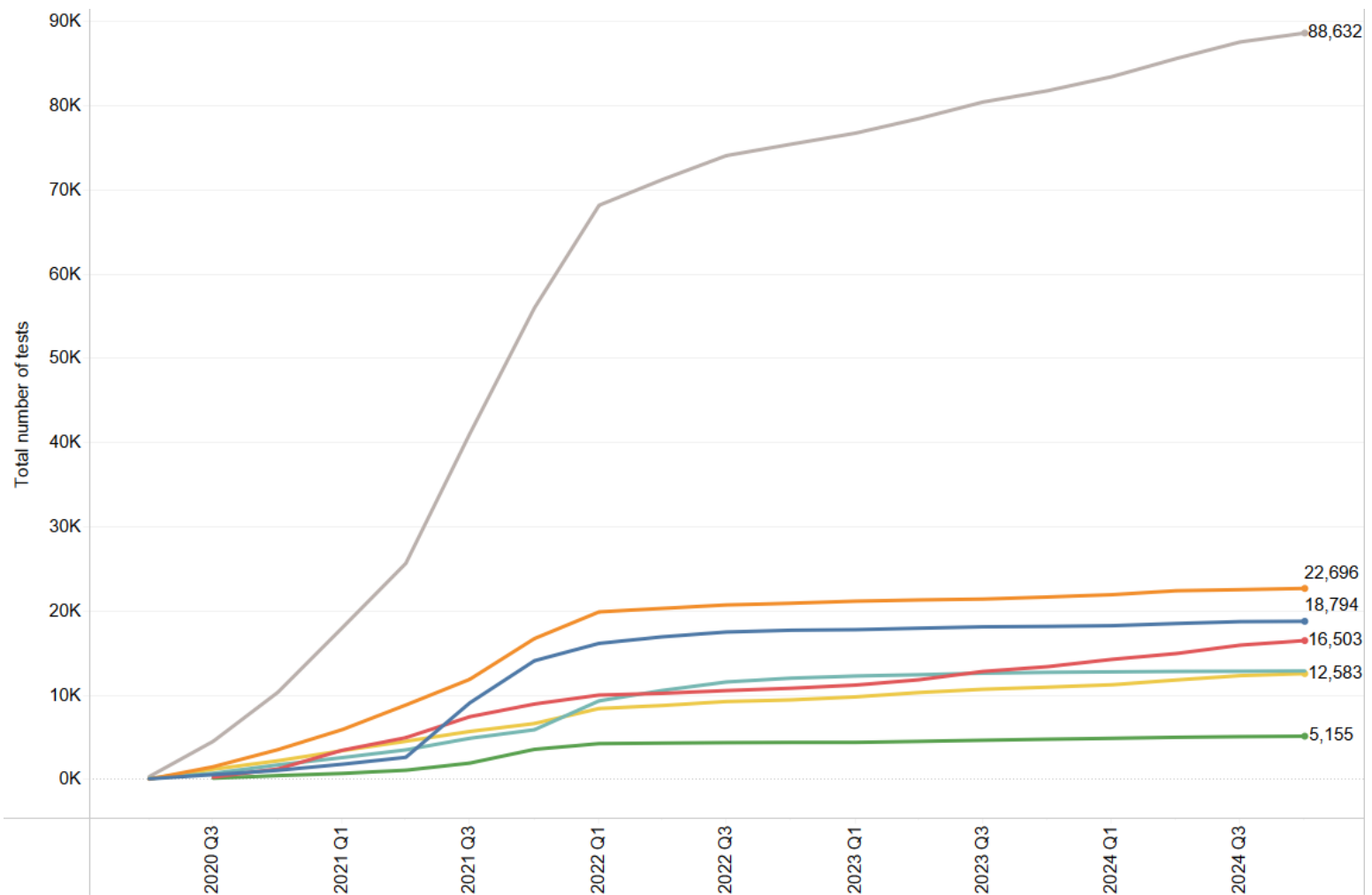




# First Nations Respiratory Infection Molecular Point of Care Testing Program Report

December 2024

## 2. Cumulative Respiratory POC patient tests over time



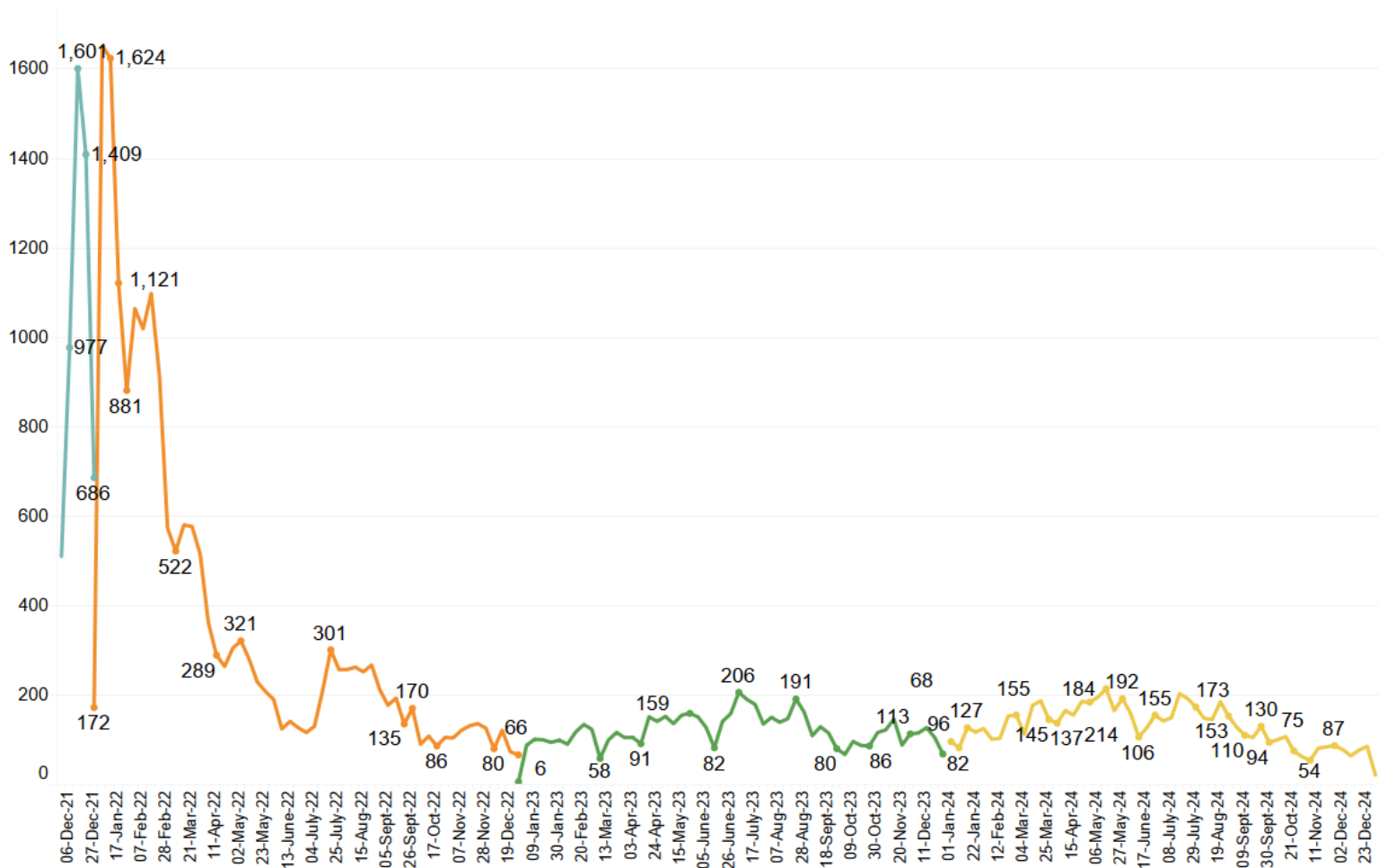
The above chart contains single-plex (SARS-CoV-2 only), 4-plex (SARS-CoV-2, FluA, FluB and RSV) and 4-plex plus patient tests. Program transitioned to using 4-plex test from July 2022 and to 4-plex plus in September 2023.

- NSW
- NT
- QLD
- SA
- VIC
- WA
- Total no of patient tests

# First Nations Respiratory Infection Molecular Point of Care Testing Program Report

December 2024

## 3. Weekly number of Respiratory POC patient tests by year



The above chart contains single-plex (SARS-CoV-2 only), 4-plex (SARS-CoV-2, FluA, FluB and RSV) and 4-plex plus patient tests. Program transitioned to using 4-plex test from July 2022 and to 4-plex plus in September 2023.

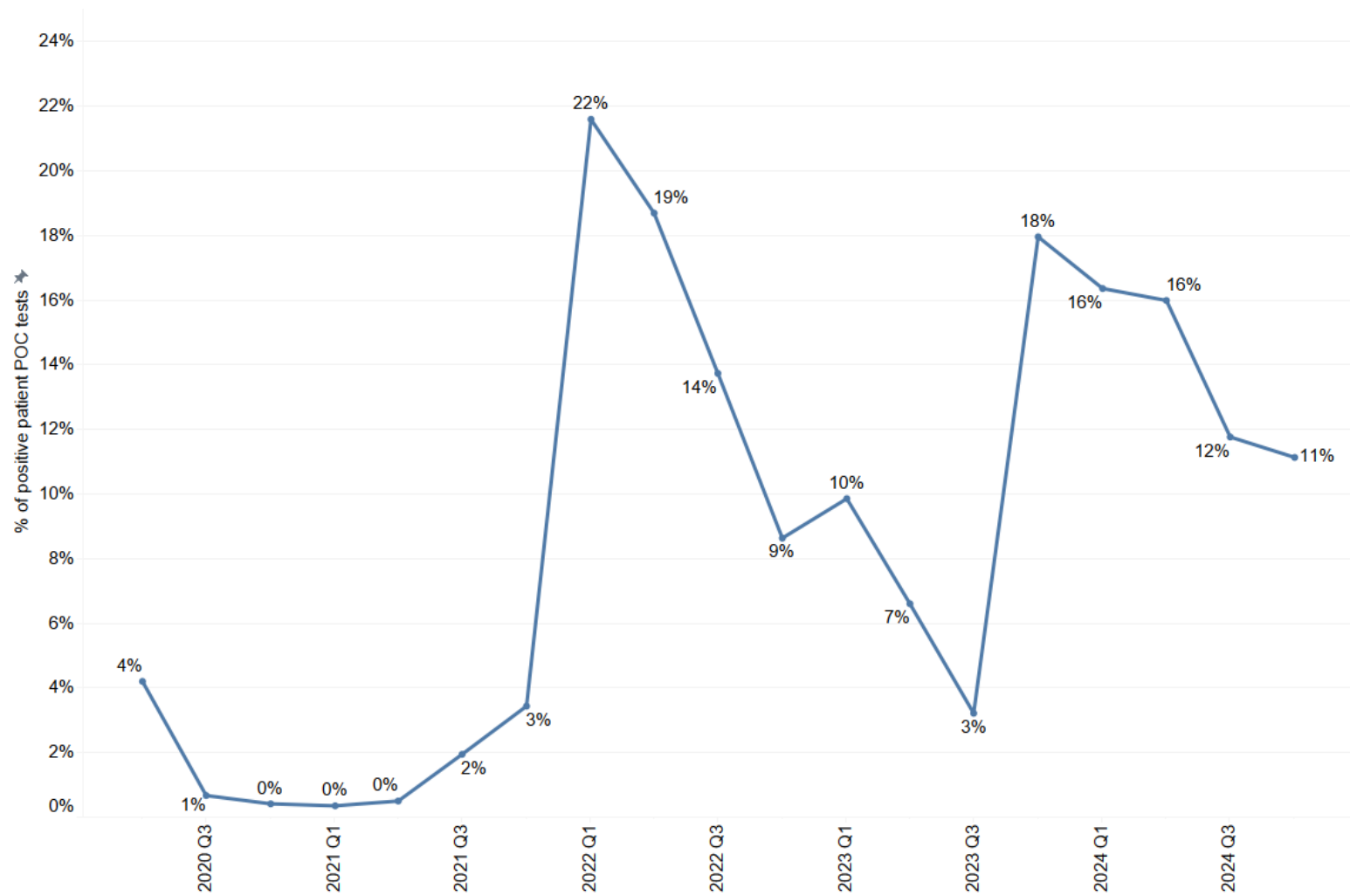
Year of test date  
■ 2021  
■ 2022  
■ 2023  
■ 2024



# First Nations Respiratory Infection Molecular Point of Care Testing Program Report

December 2024

## 4. SARS-CoV-2 POC patient test positivity



The above chart contains SARS-CoV-2 patient tests only.

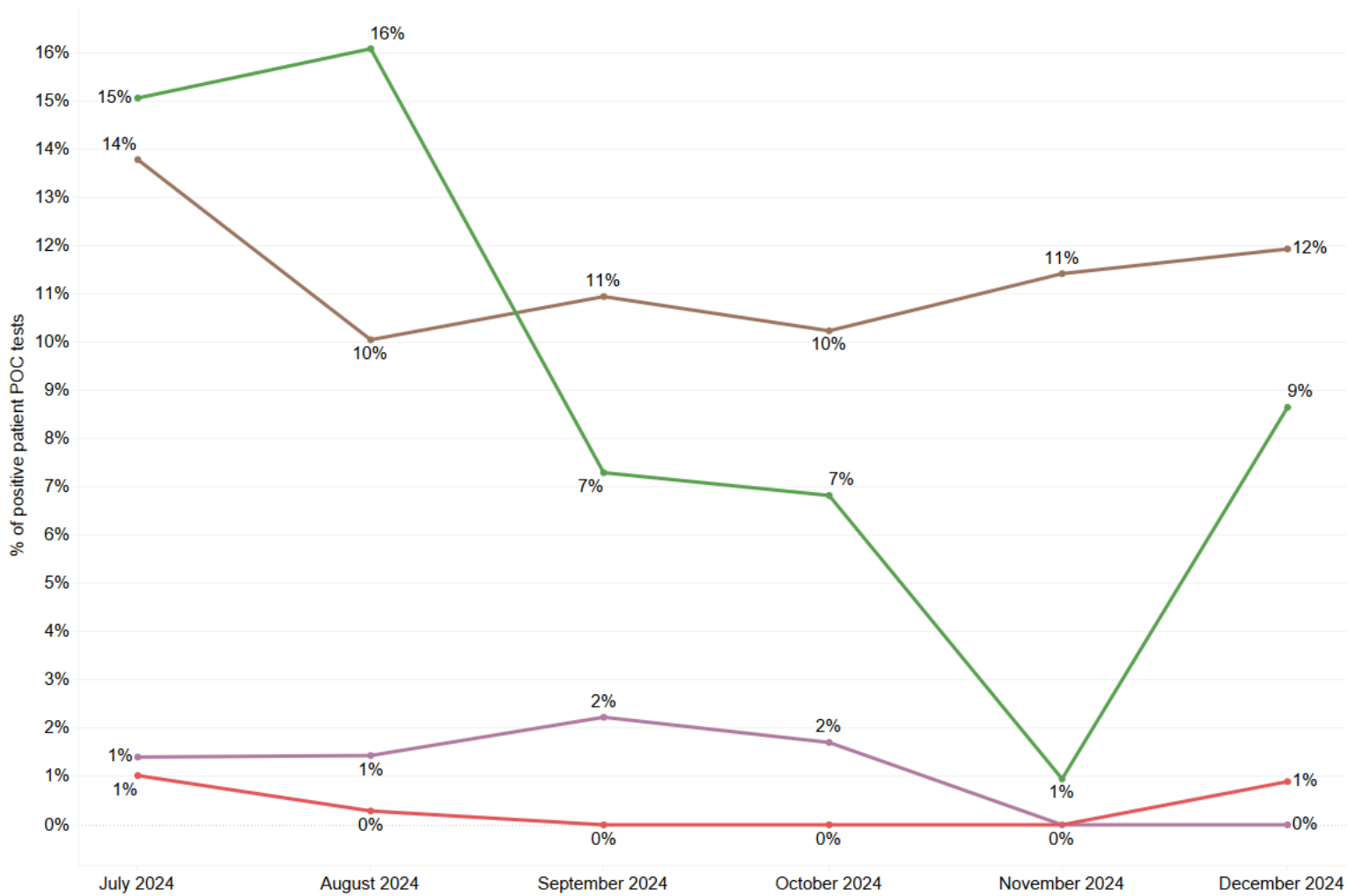


# First Nations Respiratory Infection Molecular Point of Care Testing Program Report

December 2024

## 5. Overview of Respiratory POC program for last six months

### a. Respiratory POC patient tests positivity by infection type



The above chart contains 4-plex (SARS-CoV-2, FluA, FluB and RSV) and 4-plex plus patient tests.

Respiratory Infection Type

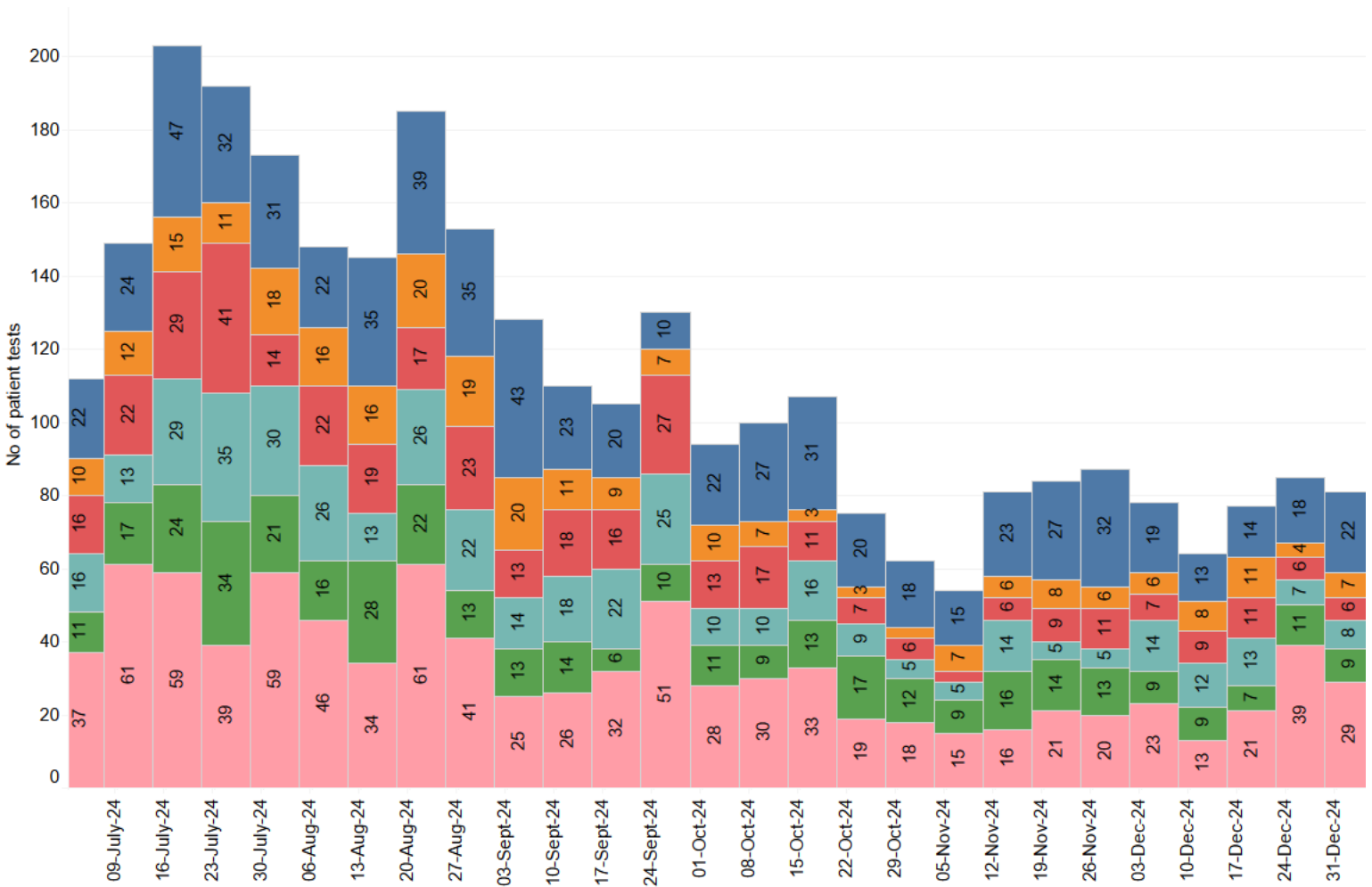
- Flu A
- Flu B
- RSV
- SARS-CoV-2

# First Nations Respiratory Infection Molecular Point of Care Testing Program Report

December 2024



b. Number of Respiratory POC patient tests per week by age group



Age Group (in years)

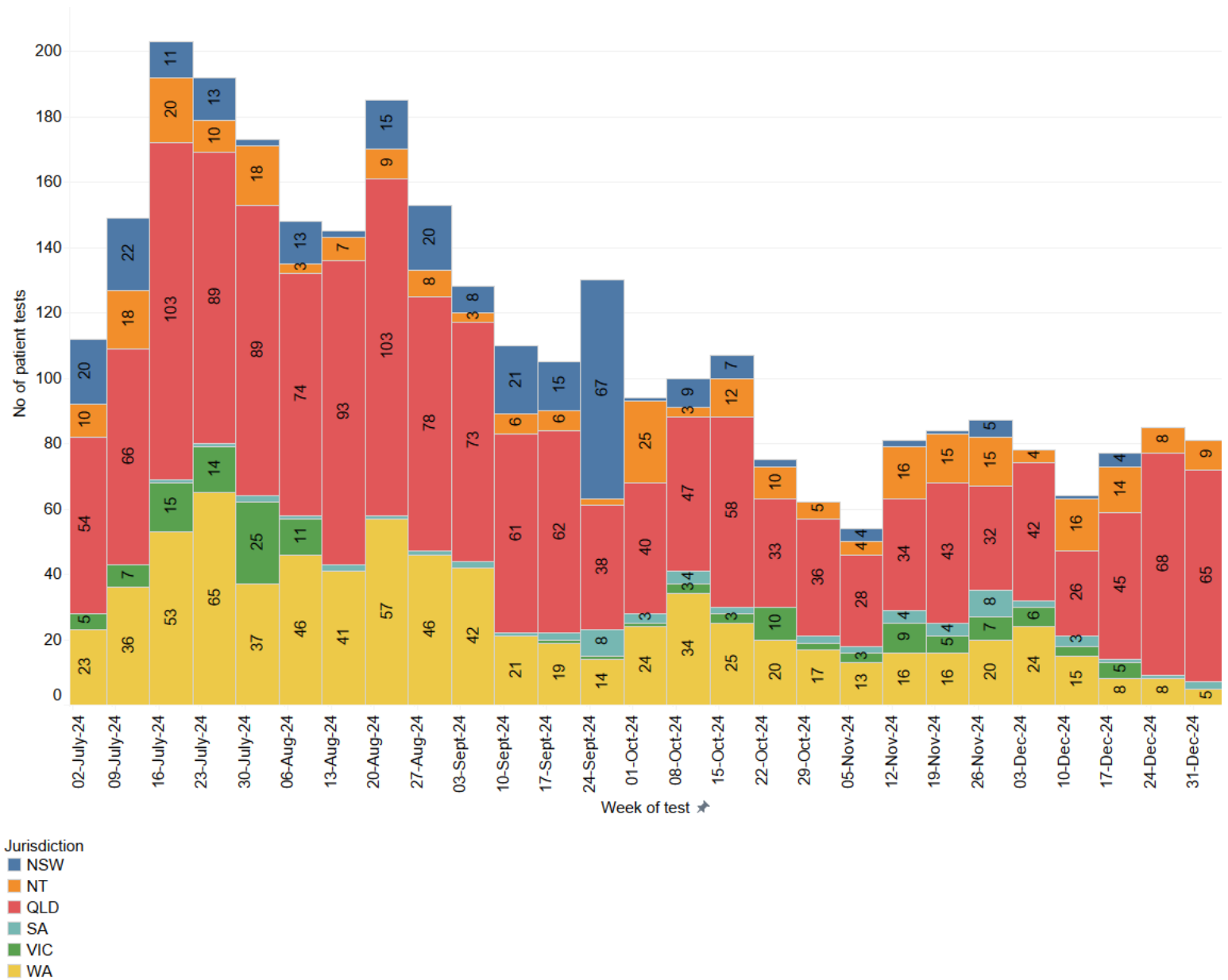
- <10
- 10-19
- 20-29
- 30-39
- 40-49
- 50+



# First Nations Respiratory Infection Molecular Point of Care Testing Program Report

December 2024

c. Number of Respiratory POC patient tests per week by jurisdiction

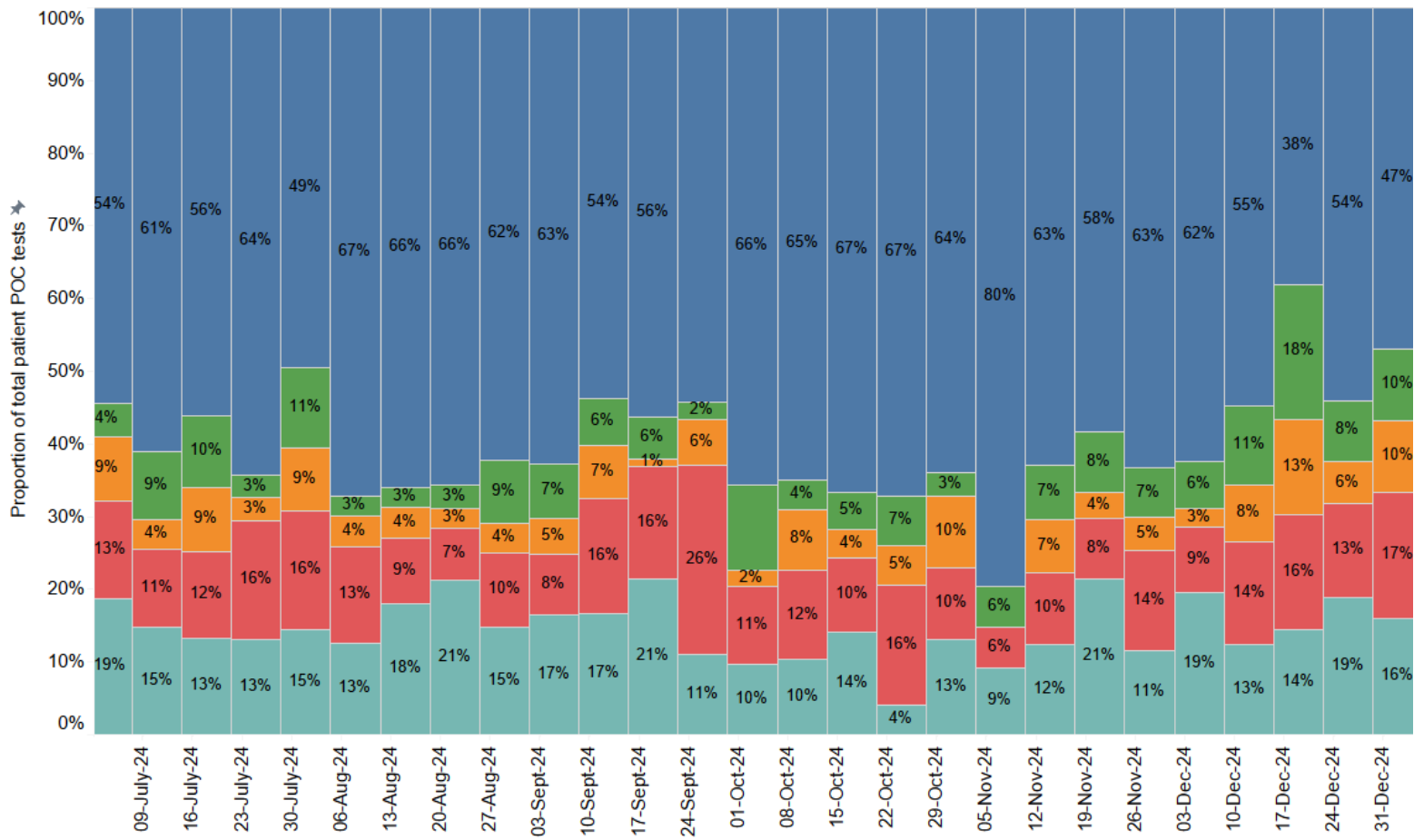




# First Nations Respiratory Infection Molecular Point of Care Testing Program Report

December 2024

## d. Proportion of Respiratory POC patient tests per week by Aboriginal and Torres Strait Islander status and Torres Strait Islander status



Aboriginal & Torres Strait Islander status  
 ■ Aboriginal  
 ■ Torres Strait Islander  
 ■ Aboriginal & Torres Strait Islander  
 ■ Non-Indigenous  
 ■ Not reported

# First Nations Respiratory Infection Molecular Point of Care Testing Program Report

December 2024

e. Proportion of Respiratory POC patient tests per week by gender

